

Receive extended warranty on your BreatheSafe products by commissioning and registering your system online*.

*Extended warranty will only be offered if at least 250Pa of pressure is reached during testing of operator cabin. This test indicates whether the system has been installed correctly and to optimal standards.



InPress UI Part Number: 200027

Step One:

Access the commissioning form via the following link or scan the QR code:
<https://cthree.breathe-safe.com/coregform>

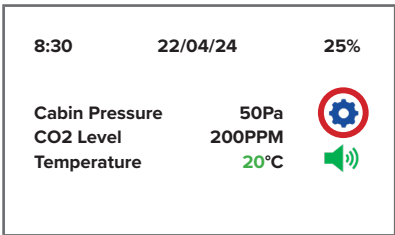
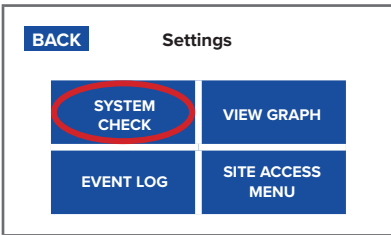
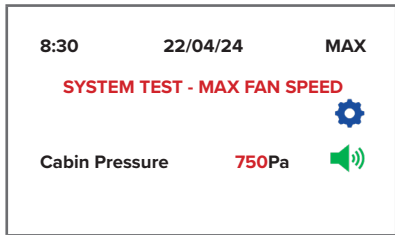


Step Two:

Carry out commissioning procedure correctly and collect required results.

System Check Guide:

- Start engine (pressuriser ON) and ensure all windows & door(s) are CLOSED correctly (no cabin pressure leaks). Perform this test with the air conditioning off.

Instructions		
 <p>8:30 22/04/24 25%</p> <p>Cabin Pressure 50Pa CO2 Level 200PPM Temperature 20°C</p>	 <p>BACK Settings</p> <p>SYSTEM CHECK VIEW GRAPH</p> <p>EVENT LOG SITE ACCESS MENU</p>	 <p>8:30 22/04/24 MAX</p> <p>SYSTEM TEST - MAX FAN SPEED</p> <p>Cabin Pressure 750Pa</p>
Press the settings cog.	Press 'System Check Set Max' button.	Cabin sealing needs to be checked and improved if maximum pressure is below 250 Pa with a new filter.

- Take a photograph of the pressure reading on the UI while the Full-Speed Test is running.
- Press settings and "Cancel System Check" to end the test.

Cabin sealing is an integral part of RS20 & ISO 23875; you must ensure that cabin seals are adequate for maintaining positive pressure. In addition, the site (end-user) must have the correct procedure(s) for servicing operator enclosure seals in a proactive manner rather than reactive. Items such as door and window seals must be in good working order or new seals fitted before the BreatheSafe system installation. **The minimum BreatheSafe requirement for cabin sealing efficiency is 250 pascals; if this result is not met, it is essential to re-examine and find pressure leaks of the enclosure and apply new sealing measures.**

Ensure you are wearing the correct PPE.



Step Three:

Fill out the commissioning form on the BreatheSafe website.



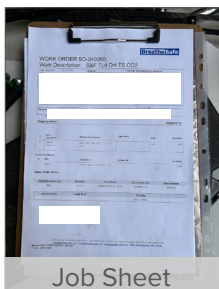
Note:
Fast-track this process by scanning the **QR code** supplied with your kit.

Step Four:

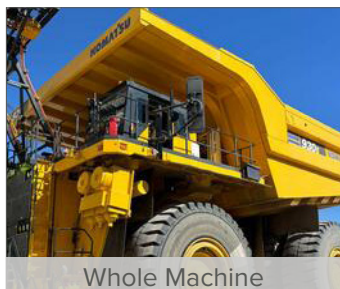
Upload the following required commissioning images:

- Job Sheet with Receiver's Signature
- Whole Machine (Showing Pressuriser)
- Mounted Pressuriser
- Return Air Filter Label
- Return Air Filter Installation
- Pressure Test Result
- Actual Pressure and Motor Load
- Commissioning Sticker
- Machine S/N Plate
- Engine Hours / Odometer

Image Examples: (duplicate + re-used images are **NOT** accepted):



Job Sheet



Whole Machine



Mounted Pressuriser



RAF Label



RAF Installation



Pressure Test Result



Actual Pressure + Motor



Comm Sticker



S/N Plate



Odometer/Hours

Step Five:

Fill in the BreatheSafe service tag with the following details:

- Machine serial number and installers details
- Date installed and "Full-Speed Test" result (max cabin pressure)
- The set cabin pressure with actual pressure and motor percentage output
- Verify the 250 pascal threshold was achieved = pass OR not achieved = fail**

Please upload machine and installation details in conjunction with the required images. A Commissioning Certificate will be sent to the email address you nominate. **Extended warranty for (RS20 & ISO 23875) BreatheSafe systems is only applicable to operator enclosures meeting this requirement.