

Kit Part Number: 700364

# Breathe Safe

Part of **Aire Safe**

## Parts and Service Manual

# KOMATSU

## PC1250-8 EXCAVATOR

HEPA H14 Variable Speed Pressuriser | INPRESS TS Cabin Display with CO2 Sensor | HEPA Return Air Filter

+ Activated Carbon



+61 7 3276 7833



[www.breathe-safe.com.au](http://www.breathe-safe.com.au)



[sales@breathe-safe.com](mailto:sales@breathe-safe.com)



62 Mica Street, Carole Park, 4300, QLD

Controlled Document: M0404

Issue Date: 20/03/24

Revision: 1

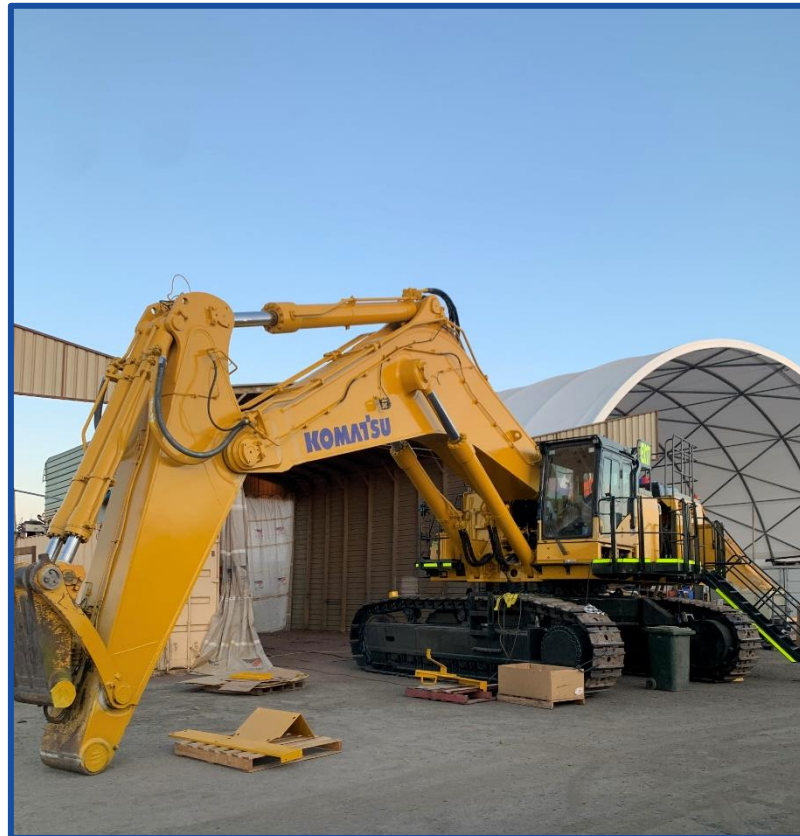
### INSTALLATION

#### CONTENTS

- Installation ..... 1
- Safety..... 2
- Critical Parts & Maintenance Schedule ..... 3
- Operator Guide ..... 4
- Specifications - Pressuriser ..... 5
- Parts List ..... 6-13
- Technical Details ..... 14-15
- Smoke Emitter Cabin Pressure Leak Test..... 16
- Cabin Sealing Test Pressure ..... 17
- Commissioning Procedures ..... 18
- Troubleshooting Guide ..... 19
- User Settings Instructions ..... 20-25
- Data Download..... 26-29
- Warranty..... 30

#### INSTALLATION OVERVIEW

|                                |           |
|--------------------------------|-----------|
| <b>Manufacturer</b>            | Komatsu   |
| <b>Type</b>                    | Excavator |
| <b>Model</b>                   | PC1250-8  |
| <b>Cabin Pressure Max</b>      |           |
| <b>Set Auto Cabin Pressure</b> |           |



**HEPA H14 Variable Speed Pressuriser**



**INPRESS TS Cabin Display with Data Recorder**



**HEPA Return Air Filter**

## WARNING

THE PRESSURISATION SYSTEM DESCRIBED IN THIS MANUAL HAS THE FOLLOWING AREAS WHICH MAY BE DANGEROUS IF NOT TREATED WITH GREAT CARE.

QUALIFIED STAFF MUST WEAR THE CORRECT PERSONAL PROTECTIVE EQUIPMENT WHEN CLEANING AND SERVICING THIS UNIT DUE TO DUST AND FIBRES WHICH MAY BE CAUGHT BY THE STAGES OF AIR FILTRATION DURING NORMAL UNIT OPERATION.

THE ELECTRICAL POWER SYSTEM IS SUPPLIED BY 12V DC OR 24V DC AND NO WORK SHOULD BE CARRIED OUT ON THE PRESSURISER SYSTEM WITHOUT THE CORRECT SAFE WORK PROCEDURES AND ELECTRICAL SAFETY MEASURES BEING TAKEN, AND ALL RELEVANT CIRCUIT BREAKER OPENED TO ISOLATE THE CIRCUIT.

THE AIR FILTRATION SYSTEM MAY HAVE SEVERAL TYPES OF HIGH-SPEED ROTATING EQUIPMENT INSTALLED WITH VERY SHARP EDGES. ENSURE ALL SAFETY GUARD ARE IN PLACE WHILE THE SYSTEM IS RUNNING.

**Please be aware that HEPA filters cannot be cleaned and must be replaced at the end of their lifecycle or if filter media has been damaged.**



### Particulate Behaviour

This is the length of time it takes for a particle to drop from a height of 1.5m in **STILL** air.



Warehouses and workshops do not have still air, so hazardous airborne particulates may remain in air for longer, increasing chance for workers to breathe in dust. Ensure PPE is worn when installing this system.



### CRITICAL PARTS & MAINTENANCE SCHEDULE

#### Maintenance Schedule

The following tables show our suggested maintenance schedule for all units. Please note that site conditions may alter this.

Excludes high corrosion environments.

Data download is required to claim the 3-year warranty on Brushless Blower Motor.

#### Inspect every 500 Hours and replace when filter is full\*

| Component / System                                      | Action Required  |
|---|--|
| Turbo Pre-cleaner                                       | Check operation of the Turbo Pre-Cleaner.  |
| Pressuriser Blower                                      | Ensure blower is operational.  |
| HEPA Primary Filter p/n: <b>500000</b>                  | Inspect filter capacity indicator. Replace HEPA filter when 80% or greater. Vacuum out housing before replacing the filter elements.   |
| HEPA Return Air Filter P/N: <b>500014</b>               | Vacuum inside cabin floor before replacing filter.   |
| Filter Frame Assembly, Mounts, Seals and Filter Housing | Check door seals, all bolts, screws, and all mounts are secure. Check the filter canister & ensure it is correctly fitted. Check latches are operational and in good order. Replace / Re-tension fixtures and fittings required. |

#### 15,000 Hours / 36 months\*

| Component / System                 | Action Required                       |
|------------------------------------|---------------------------------------|
| 500 Hour Inspection                | All 500-hour inspection actions.      |
| Pressuriser's Blower <b>200002</b> | Replace BRUSHLESS Pressuriser blower. |

| Critical Parts |             |      |  |                                 |
|----------------|-------------|------|--|---------------------------------|
| Item           | Part Number | Qty. | Description  | Service Interval                |
| 1              | 500000      | 1    | Fresh Air HEPA H14 Filter (Tested as per EN1822)         | 1000* Hours (>80% fan capacity) |
| 2              | 500014      | 1    | HEPA Return Air Filter                                   | 500* Hours                      |
| 3              | 200002      | 1    | Brushless Blower Motor – 24V                             | 15,000 Hours                    |
| 4              | 200027      | 1    | BreatheSafe Digital Display – Data Recorder (INPRESS TS) |                                 |
| 5              | 500068      | 1    | Filter Activated Carbon                                  |                                 |

\*Filter service hours are subject to cab sealing efficiency, site conditions and correct system use.

#### Suggested Schedule Servicing\*



#### Fan Capacity Indicator

The filter is serviceable if the motor capacity is between 10% & 80%. We recommend that the filter is changed if the capacity is over 80%.

\*Site dependent

### OPERATOR GUIDE

#### OPERATORS CHECKLIST

##### PRE-START

1. Visually inspect the BreatheSafe system for any damage.
2. Visually inspect the cabin for any damage to doors, windows, seals.
3. Please remove dust & debris from shoes and clothes before entering the cabin.
4. Ensure door(s) and windows are closed correctly.
5. Start engine and turn HVAC on to speed 2 (medium speed).
6. After fixed speed delay, the BreatheSafe display will show 50 Pascals or pre-set value.

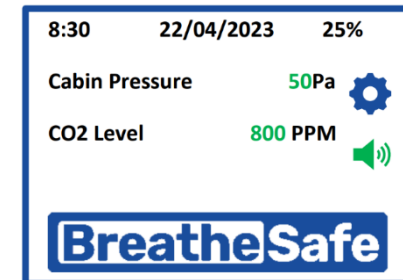
The system is working correctly when the pascal value is green.  
>> There is no further action required <<

#### NORMAL OPERATING CONDITION

##### Cab Air Conditioning

BreatheSafe recommends OEM air conditioning fan is set at mid speed or greater to circulate air around the breathing zone and minimise CO<sub>2</sub>.

Acceptable operating range for BreatheSafe fan 10-80%. >80% recommend maintenance.



#### ALERTS

##### Fixed Fan Start Delay

- Allows the operator to carry out pre-start checks – limiting at 30% fan speed, press the red text to disable.

##### CO<sub>2</sub> Level Alert (if equipped)

- Ensure air conditioning fan is set at mid speed or greater to circulate air and minimise CO<sub>2</sub>.

##### Low Pressure Alarm

- Cabin is not maintaining positive pressure – check doors and windows are closed correctly.
- Refer to maintenance department to check filters and cabin sealing. Ensure filters are serviceable.

##### Check Filter

- Reminder to inspect or replace filter. Service hour meter requires re-set.
- Refer to maintenance department.



### Specifications High-Capacity HEPA Pressuriser

|                  |   |
|------------------|---|
| Blower           | : Brushless Blower P/N 200002.  |
| Protection       | : Locked Rotor Protection (Sub Zero Environments) Under Voltage, Under/Over Current & Over Temperature.       |
| Voltage          | : 24VDC.  |
| Current Draw     | : 11 amps (peak). *Note: Motor has slow start to stop excessive in-rush current.                              |
| Air Flow         | : Up to 30-300 m <sup>3</sup> /h or 50-215 CFM.   |
| Pre-cleaner      | : Integrated VLR (Very Low Restriction). Turbo Pre-Cleaner.   |
| Filter Element   | : BreatheSafe HEPA Primary Filter (H14=99.99% MPPS) TESTED AS PER EN1822 – P/N 500000.                        |
| Plugs & Fittings | : Mining Spec. Deutsch electrical plugs as standard.  |
| Construction     | : High strength composite construction.   |
| Serviceability   | : Easy access HEPA filter with twist-lock (TL) dust cap single assembly.                                      |
| Mounting         | : Heavy Duty adjustable mounting brackets.  |
| Design           | : Fully designed in SolidWorks 3D CAD & Ansys Engineering Simulation Software.                                |
| FEA Testing      | : Critical components FEA (Finite Element Analyst) tested in Solid Works Simulation.                          |
| CFD Testing      | : CFD (Computational Fluid Dynamics) simulations in Flow Works to ensure optimum air flow through the system. |

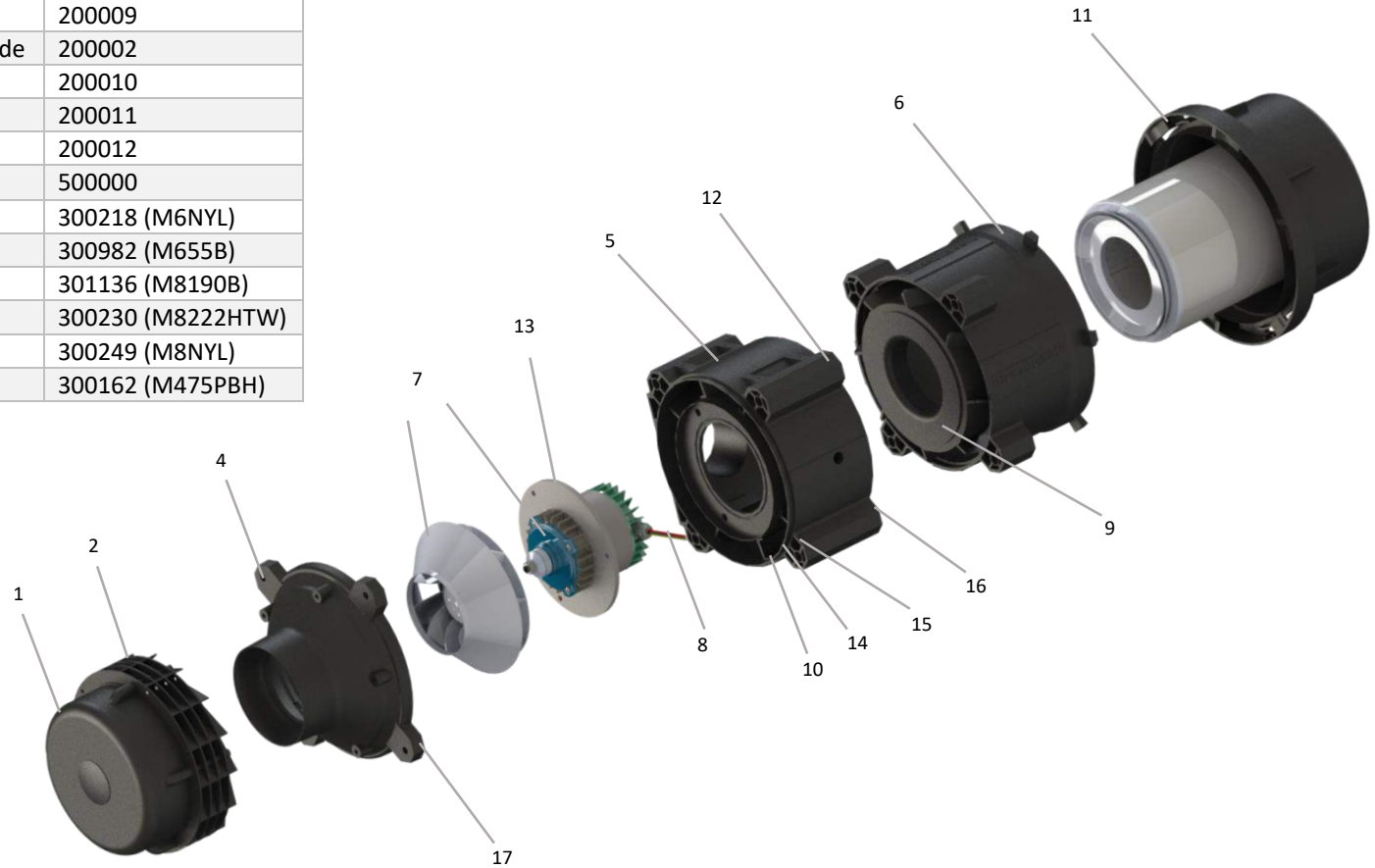
### SPECIFICATIONS HIGH-CAPACITY HEPA PRESSURISER

| List of Abbreviations |  |
|-----------------------|--|
| <b>DH</b>             | Dual HEPA  |
| <b>DHPR</b>           | Dual HEPA Powered Recirculation                  |
| <b>DHAC</b>           | Dual HEPA Activated Carbon                       |
| <b>DHACPR</b>         | Dual HEPA Activated Carbon Powered Recirculation |
| <b>CPM</b>            | Cabin Pressure Monitor                           |
| <b>CPU</b>            | Central Processing Unit                          |
| <b>DB</b>             | Decibel Sensor                                   |
| <b>DPM</b>            | Diesel Particulate Matter                        |
| <b>GAS</b>            | Gas Sensor                                       |
| <b>HEPA</b>           | High-Efficiency Particulate Air Filter           |
| <b>HPAFU</b>          | High Pressure Air Filtration Unit                |
| <b>HRAF</b>           | HEPA Return Air Filter                           |
| <b>HVAC</b>           | Heating Ventilation and Air Conditioning         |
| <b>MAF</b>            | Mass Air Flow                                    |
| <b>OEM</b>            | Original Equipment Manufacturer                  |
| <b>PM</b>             | Particulate Mass                                 |
| <b>RH</b>             | Relative Humidity                                |
| <b>TEMP</b>           | Temperature                                      |
| <b>TS</b>             | Touch screen                                     |
| <b>UI</b>             | User Interface                                   |
| <b>VMS</b>            | Vehicle Monitoring System                        |
| <b>VS</b>             | Vibration Sensor                                 |
| <b>OGSP</b>           | OnGuard Sensor Pod                               |
| <b>CO2s</b>           | CO2 Sensor INPRESS TS                            |

| Item No. | Qty. | Description                               | Part No.          |
|----------|------|---|-------------------|
| 1        | 1    | Pre-cleaner Hood & Rotor Assy             | 200004            |
| 2        | 4    | Pre-cleaner Injector Ring                 | 200005            |
| 3        | 1    | TL Fan Blade (inc. in #7)                 | 200006            |
| 4        | 1    | TL Nose Cone / Pre-cleaner                | 200007            |
| 5        | 1    | TL Motor Housing                          | 200008            |
| 6        | 1    | TL Filter Housing                         | 200009            |
| 7        | 1    | 24v DC Brushless VSD Motor & TL Fan Blade | 200002            |
| 8        | 1    | O Ring Seal Kit 2 Parts                   | 200010            |
| 9        | 1    | Included in 8                             | 200011            |
| 10       | 1    | Wiring Sleeve                             | 200012            |
| 11       | 1    | HEPA H14 Filter                           | 500000            |
| 12       | 3    | M6 Nyloc Nut                              | 300218 (M6NYL)    |
| 13       | 3    | M6 x 55mm Hex Bolt                        | 300982 (M655B)    |
| 14       | 4    | M8 x 190 Hex Bolt                         | 301136 (M8190B)   |
| 15       | 8    | M8 x 22mm O/D HD Washer                   | 300230 (M8222HTW) |
| 16       | 4    | M8 Nyloc Nut                              | 300249 (M8NYL)    |
| 17       | 5    | M4 x 75mm Pan Head Phillips Screw         | 300162 (M475PBH)  |

### PARTS LIST – 24V DC PRESSURISER UNIT

**PRESSURISER ASSEMBLY No: 200000**

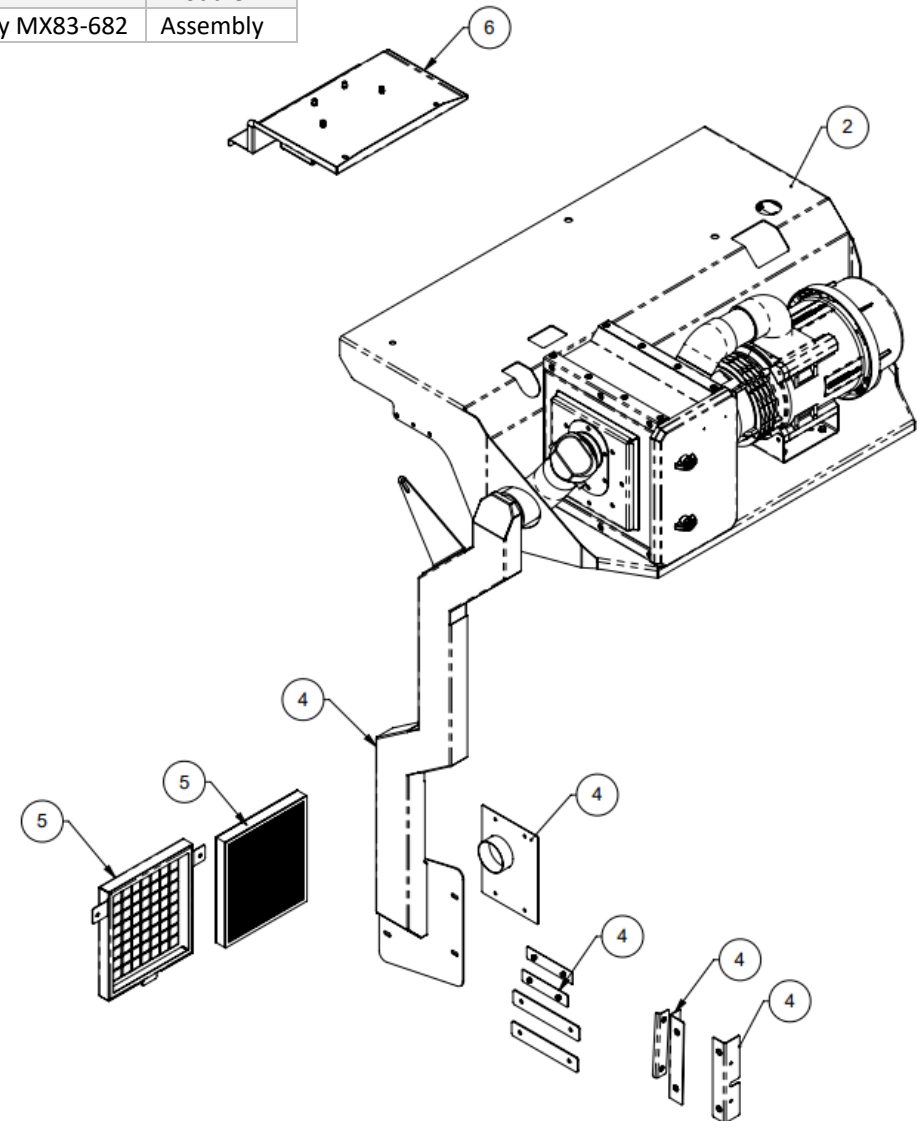


**PARTS LIST GA**

**COMPLETE ASSEMBLY No: 700364**

| Item No. | Part No.  | Rev | Description                              | Qty | Colour                 | Group      |
|----------|-----------|-----|--|-----|------------------------|------------|
| 1        | 200202    | [*] | TS Controller Assembly                   | 1   | -                      | Stock Item |
| 2        | 100376A01 | 0   | High Pressure Unit Module                | 1   | Charcoal Grey MX83-682 | Module     |
| 3        | 100376P01 | 0   | Pipework Module                          | 1   | Charcoal Grey MX83-682 | Module     |
| 4        | 08428     | 1   | Ducting, Fresh Air Inlet & Mounting Assy | 1   | Charcoal Grey MX83-682 | Module     |
| 5        | 07639     | 0   | Return Air Filter Frame Assy             | 1   | (Per Assy)             | Module     |
| 6        | 07576     | 2   | Monitor Mounting Panel Assy              | 1   | Charcoal Grey MX83-682 | Assembly   |

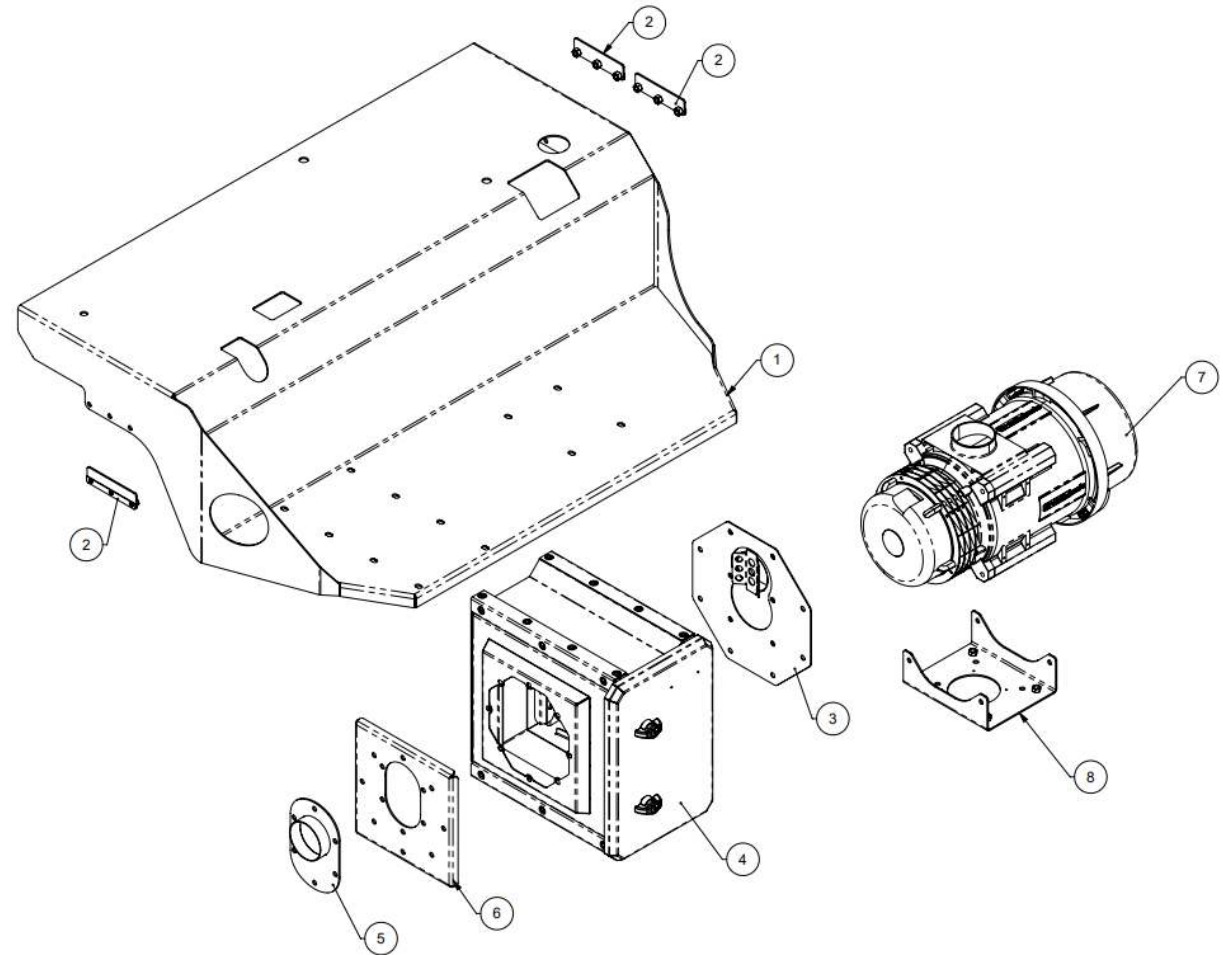
**Kit Part Number: 700364**





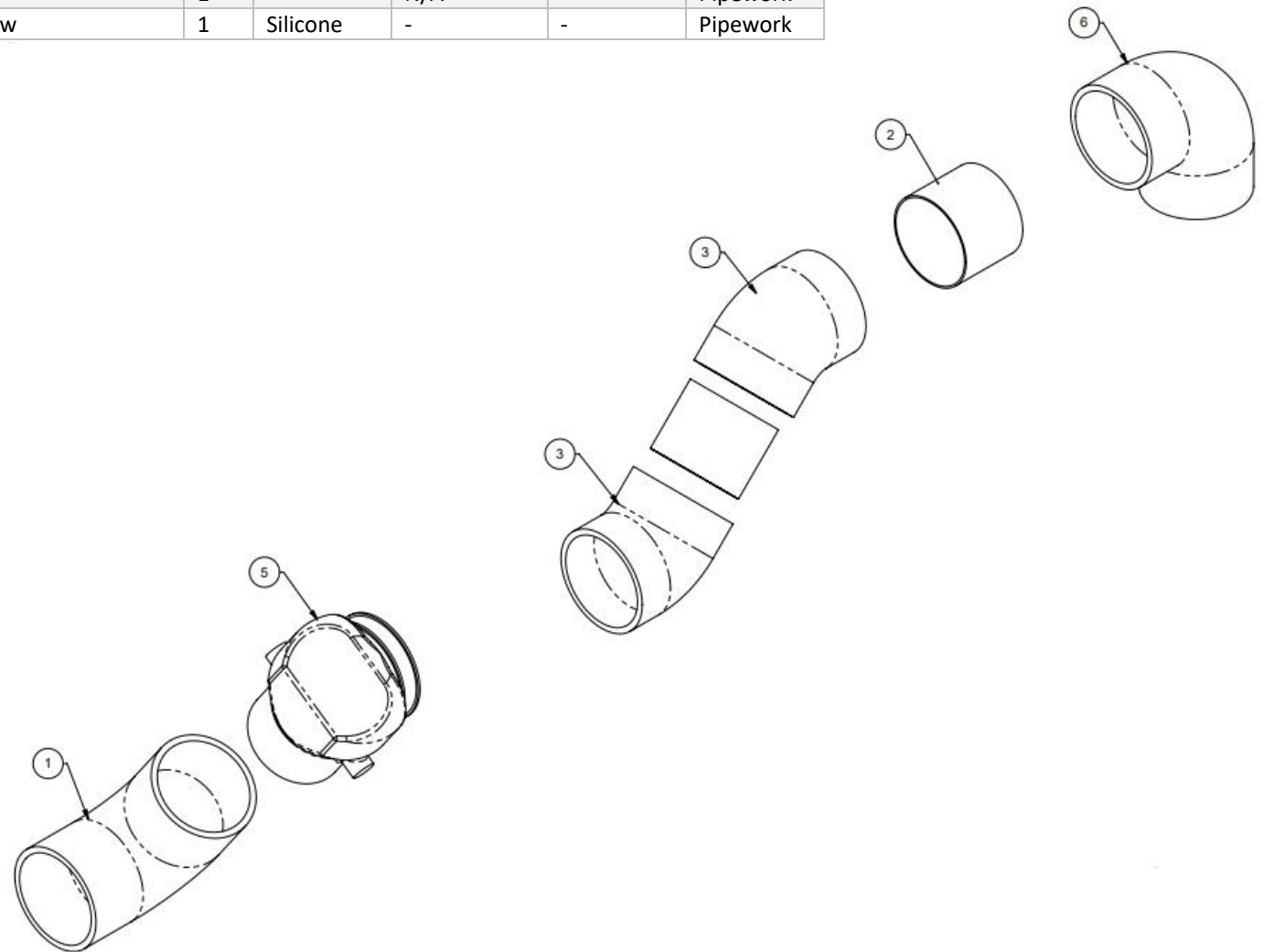
| Item No. | Part No.    | Rev | Description              | Qty | Material   | Thickness  | Colour | Category   |
|----------|-------------|-----|--------------------------|-----|------------|------------|--------|------------|
| 1        | 100376-A712 | 0   | TL & MK3 Baseplate       | 1   | Mild Steel | 3          | -      | Part       |
| 2        | 07553       | 0   | Roof Clamp Sub Assembly  | 3   | N/A        | -          | -      | Weld Assy  |
| 3        | 08360       | 0   | MK3 SO2 Adj Inlet Assy   | 1   | N/A        | 1.6        | -      | Stock Item |
| 4        | ST100502    | [*] | MK3 Base Case 316SS      | 1   | SS 304 N4  | -          | -      | Stock Item |
| 5        | ST100510    | [*] | MK3 SO2 Adj Outlet Assy  | 1   | SS 304 N4  | 1.6        | -      | Stock Item |
| 6        | ST100511    | [*] | MK3 SO2 Adj Outlet Plate | 1   | SS 304 N4  | 1.6        | -      | Stock Item |
| 7        | 200000      | [*] | TL4 24V DC Unit          | 1   | -          | -          | -      | Stock Item |
| 8        | 12503       | 0   | STD TL Mount – M8 Nuts   | 1   | Mild Steel | (Prt Dwgs) | -      | Stock Item |

## PARTS LIST – PRESSURISER MODULE



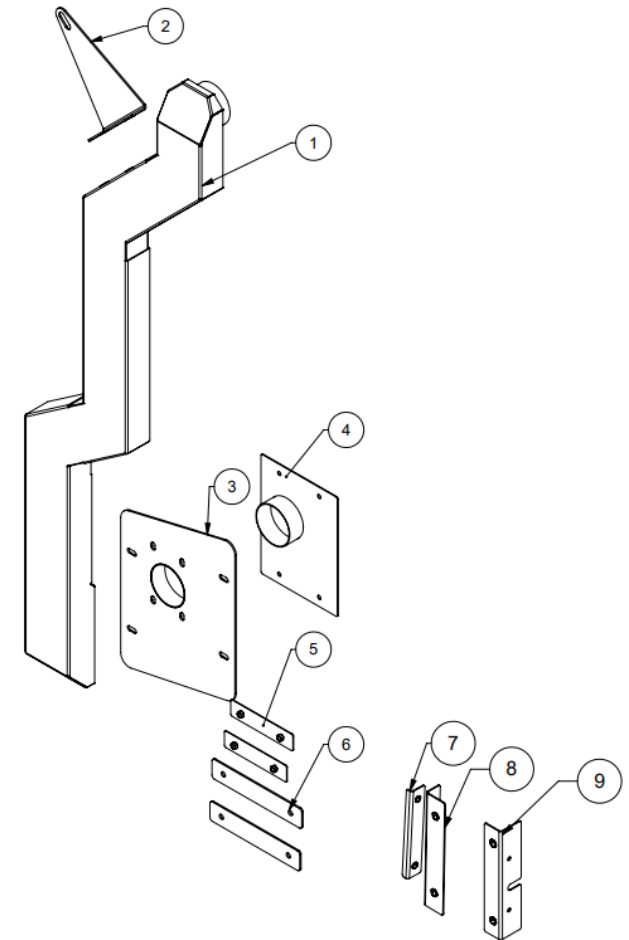
| Item No. | Part No.    | Rev | Description            | Qty | Material | Thickness | Colour | Category |
|----------|-------------|-----|------------------------|-----|----------|-----------|--------|----------|
| 1        | 200308      | 0   | 3" – 90Deg Short Elbow | 1   | Silicone | -         | -      | Pipework |
| 2        | 300388-0060 | -   | 76 SS Tube @60L        | 1   | SS Tube  | 1.6       | -      | Pipework |
| 3        | 200306      | -   | 3" – 45Deg Short Elbow | 2   | Silicone | -         | -      | Pipework |
| 4        | 300388-0060 | -   | 76.3 x 1.6 @60mm       | 1   | SS Tube  | 1.6       | -      | Pipework |
| 5        | 300848      | N/A | 3" Cobra Neck          | 1   | -        | N/A       | -      | Pipework |
| 6        | 200308      | 0   | 3" – 90Deg Short Elbow | 1   | Silicone | -         | -      | Pipework |

## PARTS LIST – PIPEWORK MODULE



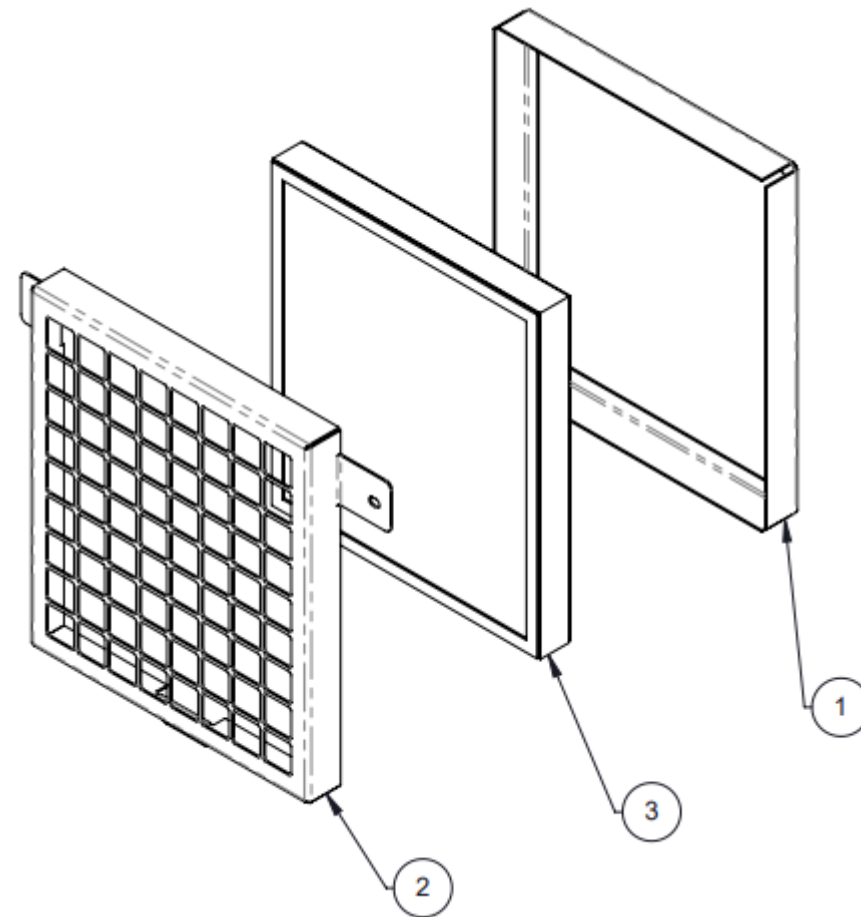
| Item No. | Part No. | Rev | Description                    | Qty | Material   | Thickness | Colour                 | Category |
|----------|----------|-----|--------------------------------|-----|------------|-----------|------------------------|----------|
| 1        | 08429    | 1   | Ducting Sub Assembly           | 1   | N/A        | -         | Charcoal Grey MX83-682 | -        |
| 2        | 07560    | 1   | Ducting Mount Bracket          | 1   | Mild Steel | 3         | Charcoal Grey MX83-682 | -        |
| 3        | 07561    | 0   | Fresh Air Inlet Plate Assembly | 1   | N/A        | -         | Charcoal Grey MX83-682 | -        |
| 4        | 07564    | 0   | Internal Fresh Air Plate Clamp | 1   | N/A        | -         | Charcoal Grey MX83-682 | -        |
| 5        | 07567    | 0   | Internal Fresh Air Plate C Bar | 2   | N/A        | -         | Charcoal Grey MX83-682 | -        |
| 6        | 07569    | 0   | Fresh Air Clamp Plate Outer    | 2   | Mild Steel | 3         | Charcoal Grey MX83-682 | -        |
| 7        | 07570    | 0   | Mounting Bracket A Assembly    | 1   | N/A        | -         | Charcoal Grey MX83-682 | -        |
| 8        | 07572    | 0   | Mounting Bracket B Assembly    | 1   | N/A        | -         | Charcoal Grey MX83-682 | -        |
| 9        | 07574    | 0   | Mounting Bracket C Assembly    | 1   | N/A        | -         | Charcoal Grey MX83-682 | -        |

### PARTS LIST – DUCTING MODULE



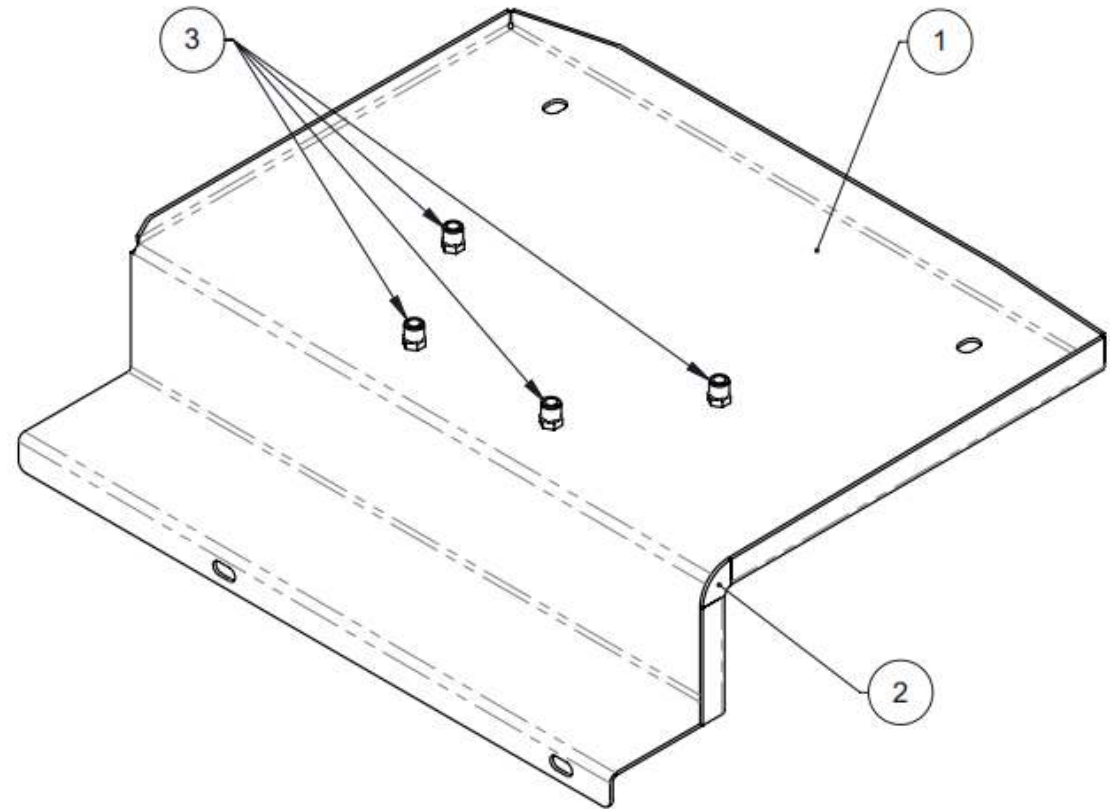
| Item No. | Part No. | Rev | Description                | Qty | Material | Thickness | Colour                  | Category    |
|----------|----------|-----|----------------------------|-----|----------|-----------|-------------------------|-------------|
| 1        | 07641    | 0   | Return Air Filter Inner    | 1   | Zan      | 1.6       | Charcoal Satin 27288351 | Part        |
| 2        | 07640    | 0   | R.A.F. Filter Outer        | 1   | Zan      | 1.6       | Charcoal Satin 27288351 | Part        |
| 3        | 500014   | 0   | HEPA Filter 280 x 250 x 31 | 1   | N/A      | -         | -                       | HEPA Filter |

### PARTS LIST – RETURN AIR MODULE



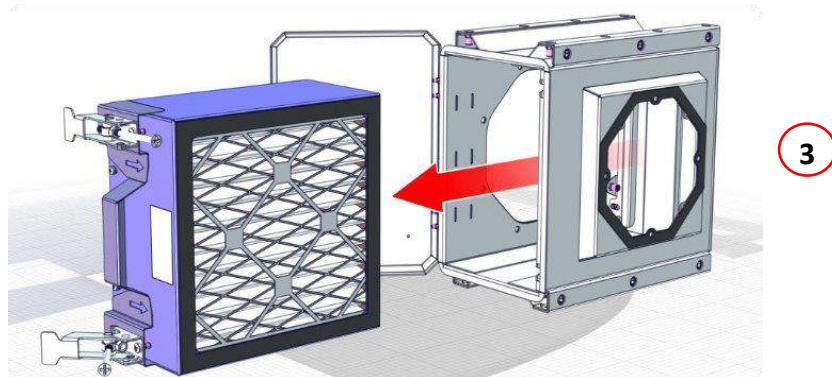
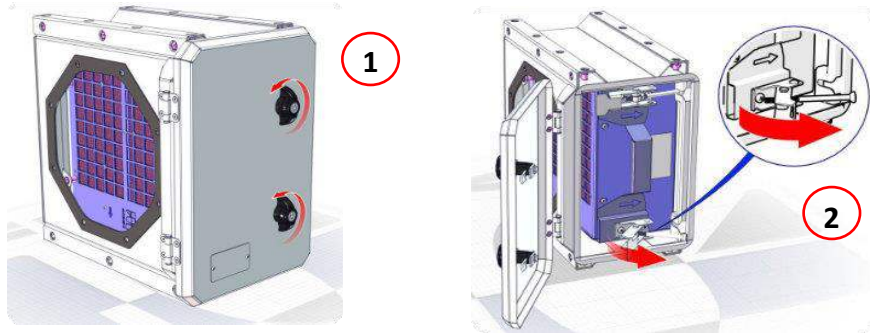
| Item No. | Part No. | Rev | Description               | Qty | Material    | Thickness | Colour                  | Category |
|----------|----------|-----|---------------------------|-----|-------------|-----------|-------------------------|----------|
| 1        | 07577    | 1   | Monitor Mounting Panel    | 1   | Zan         | 1.95      | Charcoal Satin 27288351 | Part     |
| 2        | 07578    | 0   | Monitor Mounting Panel    | 1   | Zan         | 1.95      | Charcoal Satin 27288351 | Part     |
| 3        | 300215   | -   | Hex Nut Sert Crs M6 Zn TF | 4   | Zinc Plated | -         | -                       | Fastener |

### PARTS LIST – MONITOR MODULE



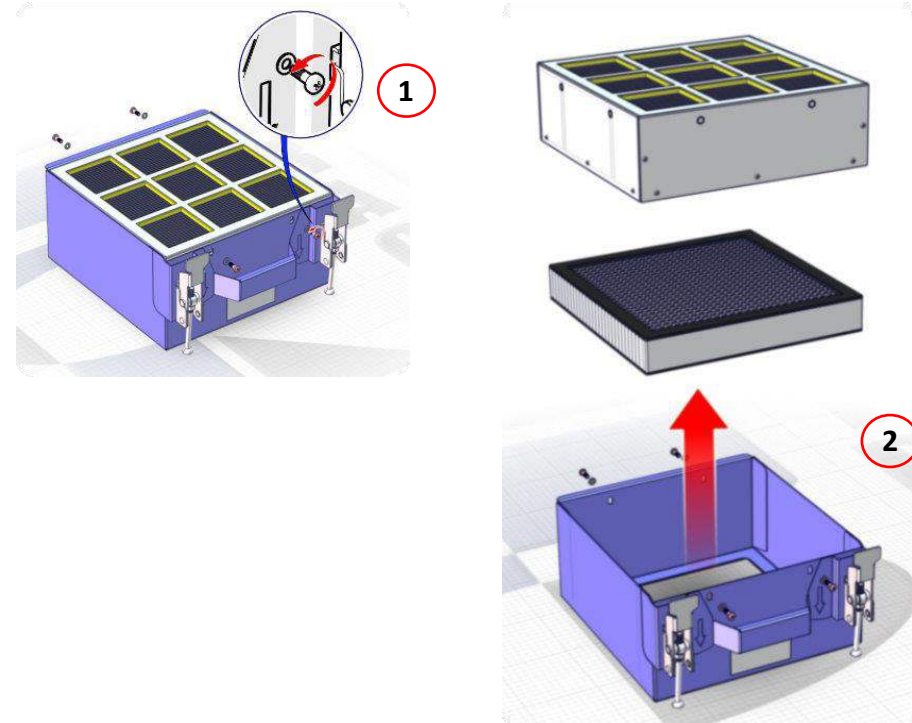
## Carbon Filter Carrier Removal

1. Ensure all relevant circuit breakers are open and the electrical circuit is isolated.
2. Unlock & open the door (Fig 1)
3. Uncouple both filter latches (Fig 2)
4. Pull the filter in the opposite direction off the air flow arrows, until clear (Fig 3)
5. Full the filter towards you and remove (Fig 3)
6. Clean the filter housing of all debris.
7. To replace the filter, assemble the components in reverse order.



## Carbon Filter Service Kit

1. Please follow the steps shown for the Filter Media Carrier Removal, to remove the carrier from the case.
2. Unscrew & remove the 4-off M5 screws (Fig 1)
3. Lift out the solid Media Filter (Fig 2)
4. Lift out the Secondary HEPA Filter (Fig 2)
5. Clean the filter housing of all debris.
6. To refit, assemble the components in reverse order.





## General Guide to Cabin Sealing, Testing, and Commissioning of BreatheSafe variable speed Pressurisation Units (Clean Cabin with HEPA vacuum)

|    |   |
|----|---|
| 1  | Inspect the cabin and ensure all cover panels are in place and any cabin pressure leaks are sealed with grommets, sealer, fit new door seals for used equipment, etc  |
| 2  | Sitting inside the cabin with the door open, turn on the ignition to power up the unit.   |
| 3  | The pressuriser fan should power up to full speed, and the monitor should indicate 0 Pa pressure (Allow $\pm 2$ pascals wind gusts).  |
| 4  | With the ignition on, close all doors and windows. If the cabin is adequately sealed, the monitor should indicate 50 Pa (Pascals), set pressure or whichever pre-set has been chosen. (If not achieved, check for cabin pressure leaks).  |
| 5  | Once a cabin pressure of 50 Pa is confirmed. Go to the setting menu, select "System Check." The display will indicate "System Test - Max Fan" on the screen while showing the maximum cabin pressure.   |
| 6  | The MAX cabin pressure should be above 250 Pascals related to the efficiency of cabin seals (Please note the minimum result for warranty compliance is 250 pascals tested with a new 500000 HEPA filter). Therefore, a cabin pressure result of 300 to 500 pascals is the ideal result. |
| 7  | If the above pressure is not achieved, leave the unit at full speed and investigate external leaks outside the cabin: e.g., A/C outlets, drains, window & door seals, locks & hinges, etc.  |
| 8  | If necessary, with the ignition on, controller on 'MAX FAN SPEED,' A/C blower OFF & all doors & windows closed, set off a smoke emitter inside the cabin (SWP attached).  |
| 9  | Locate any air leaks around the cabin and re-test. If silicone sealant or similar is used, allow it to dry before re-testing, as even slamming the door could push the seal back out.   |
| 10 | Continue the sealing and testing procedure as above until a satisfactory outcome is achieved. Fill out the record below and attach photo evidence of maximum pressure result and NANOZEN Real-time Dust Monitoring result to register for warranty                                      |



\* Do not handle until MSDS & all safety precautions have been read and understood. Use personal protective equipment as required.

Before use, carefully read the product label. Safe work practices are advised to avoid eye or skin contact and inhalation. Observe good personal hygiene, including washing hands before eating. Prohibit eating, drinking, and smoking in contaminated areas. Avoid inhalation. Mechanical extraction ventilation is recommended when the removal of atmospheric contaminants is required. Maintain dust / fume levels below the recommended exposure standard. For small amounts, absorb with sand, vermiculite or similar and dispose of at an approved landfill site.

### WARNING

- For Professional Use Only – keep out of reach of children.
- Do not ignite near or around flammable materials.
- Use only in well-ventilated areas, outdoors, and/or with proper respiratory protection.
- Persons with respiratory sensitivity should avoid exposure to any smoke.
- Concentrated smoke may cause severe burns to the skin, eyes, or respiratory system.
- Improper use may result in sufficient inhalation of smoke to cause respiratory tract irritation and lung damage.
- Harmful if swallowed.

### DANGER

Use only as directed. Do not handle until all safety precautions, including Safety Data Sheet, have been read and understood. The product contains hexachloroethane. Wear protective clothing. If exposed or concerned, get medical advice. Store in a cool, dry, secure location. KEEP OUT OF REACH OF CHILDREN. Dispose of contents/container per location regulations. When used as directed, exposure should be limited and usually poses no hazard because the hexachloroethane is consumed inside the tube as smoke is produced.

### Directions: (Smoke Bomb)

1. Ensure other workers in close proximity are informed of use. Place on a non-combustible container, away from flammable materials.
2. Place at Blower intake, or upwind of target area, or near centre of space.
3. Orient "Smoke Issues Here" toward air stream, away from surfaces. Place candle on a flame / heat resistance plate – if not it will melt into the plastic surface.
4. Ensure smoke will not create any hazard where it is anticipated to go.
5. Ignite emitter inside the cabin using site approved device i.e., solder torch or 'lighter' and conduct smoke test.
6. Do not touch or hold smoke generator after ignition – item becomes very hot & remains hot after use.





### Smoke Emitter Cabin Pressure Leak Test

1. The pressuriser system is switched on (TEST MODE).
2. Hold the smoke emitter angled down.
3. Ignite emitter using site approved ignitor i.e., solder torch or 'lighter'.
4. When the product ignites, remove the lighter.
5. If the product flames up, blow out the flame.
6. Place the emitter in a non-flammable container and place it inside the cabin at floor level and close the door/windows.
7. Observe smoke leaks to indicate worn-out or broken seal locations. Check leakage points outside the cabin.
8. Do not come into contact with or inhale smoke haze.
9. Wait until the smoke haze **completely** disperses before re-entering the cabin. Open door to allow sufficient ventilation of smoke prior to entering cabin.




## SMOKE EMITTER CABIN PRESSURE LEAK TEST

Link to MSDS: [SMOKE GENERATOR TQ7621AT30S.pdf](#)




### Personal Protective Equipment (PPE)

|   |   |
|---|---|
|  | Safety glasses must be worn at all times.       |
|  | Sturdy footwear with rubber soles must be worn. |
|  | Respiratory protection devices may be required. |
|  | Gloves may be worn.                             |

### Pre-operational Safety Checks

|   |  |
|---|--|
|  | Locate and ensure you are familiar with all machine operations and controls.                           |
|  | Check work area and walkways to ensure no slip/trip hazards are present.                               |
|  | Ensure the work area is clean and clear of any flammable material & fire extinguish device is present. |



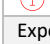
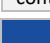
### Operational Safety Checks

|   |  |
|---|--|
|    | Ensure the machine is correctly isolated / immobilized.                |
|  | Ensure other persons do not inhale smoke haze.                         |
|  | Take care and do not place a lit emitter close to a flammable surface. |



### Ending Operations and Cleaning Up

|   |   |
|---|---|
|  | Leave the work area in a safe, clean, and tidy state. |
|---|---|

### Potential Hazards

|   |                  |
|---|------------------|
|                              | Falls            |
|                              | Fumes            |
|                              | Fire             |
|                              | May cause cancer |
| Exposure is highly unlikely when the product is used as directed. Direct contact with the product does not occur. |                  |

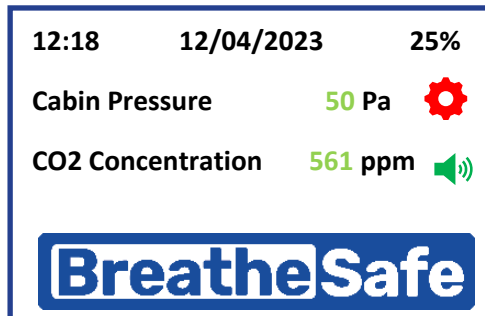
### Don't

|   |  |
|---|--|
|  | Do not use if an open flame is forbidden.        |
|  | Never leave the emitter [cabin test] unattended. |

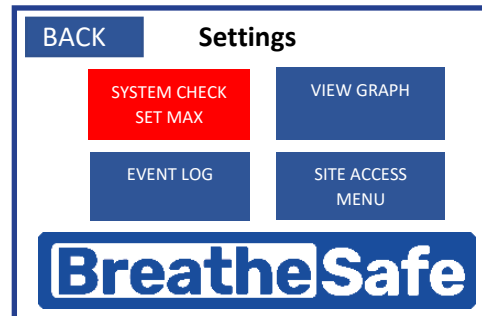
\*This SWP does not necessarily cover all possible hazards associated with this equipment and should be used in conjunction with other references. It is designed as a guide to be used to compliment training and as a reminder to users prior to equipment use.

## CABIN SEALING TEST PROCEDURE

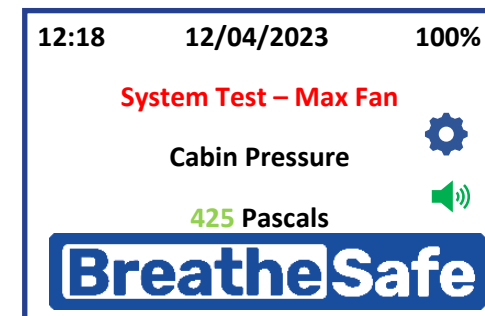
| Cabin Sealing Efficiency Test Procedure |   |
|---|---|
| 1                                       | Start Engine – Pressuriser System is ON   |
| 2                                       | Ensure all windows & door(s) are CLOSED correctly (no cabin pressure leaks)<br>NOTE: for a new cabin with effective seals, you may need to open a window slightly before closing the door to bleed the static cabin air pressure outwards. Once door is fully closed then close windows to begin testing. |
| 3                                       | Enter the Settings menu via the touch screen button.  |
| 4                                       | Select and press the System Check button to go to System Test – Max Fan.  |
| 5                                       | Record / photograph the maximum cabin pressure achieved.  |



Press Settings.



Press "System Check – Set Max" box.



Record / Photograph the cabin pressure result (Max Fan Speed).

### Commissioning Procedures

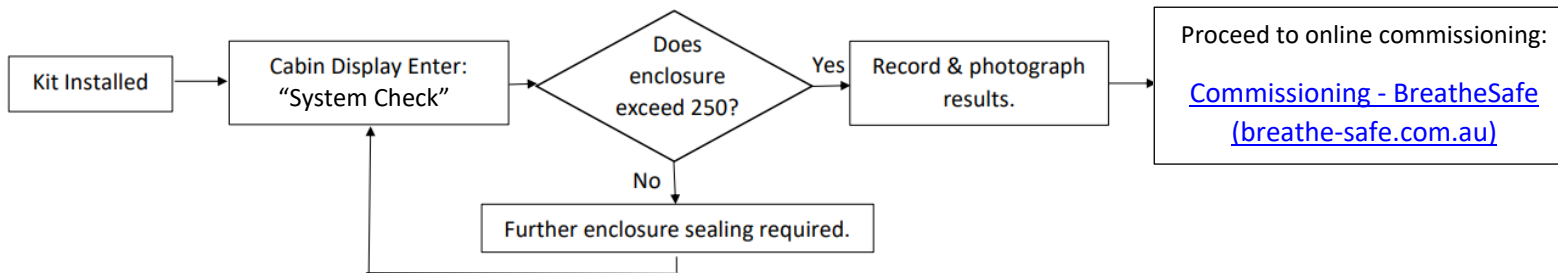
Follow each step of the installation guide that was supplied with the BreatheSafe kit.

Cabin sealing is an integral part of RS20 & ISO 23875; you must ensure that cabin seals are adequate for maintaining positive pressure. In addition, the site (end- user) must have the correct procedure(s) for servicing OPERATOR enclosure seals in a proactive manner rather than reactive. Items such as door and window seals must be in good working order or new seals FITTED before the BreatheSafe system installation.

Touch-screen cabin pressure display/controller Part# 200027:

**\*System Check Function:** enter the Settings menu option and select “System Check – Set Max.” The minimum BreatheSafe requirement for cabin sealing efficiency is 250 pascals; if this result is not met, it is essential to re-examine and find pressure leaks of the enclosure and apply new sealing measures.

Submission for commissioning procedure as per the diagram below:



The commissioning images required are:

- ID plate / Machine Serial Number / Asset Number or Call Sign
- INPRESS TL Pressuriser location
- HEPA Return Air Filter Location Option: Powered Return Air Filter
- Cabin Pressure Display Location – Including the “System Check” maximum cabin pressure result with motor output capacity %

Fill in the BreatheSafe Service Tag with the following details:

- Machine Serial Number and Installers details
- Date installed and System Check result (max cabin pressure)
- The set cabin pressure with actual pressure and motor percentage output
- Verify the 250-pascal threshold was achieved = pass OR not achieved = fail\*\*

Please upload machine and installation details in conjunction with the required images. A Commissioning Certificate will be sent to the email address you nominate. \*\*Extended warranty for (RS20 & ISO 23875) BreatheSafe Systems is only applicable to operator enclosures meeting

### COMMISSIONING PROCEDURES – CABIN PRESSURISER

**BreatheSafe**  
Part of AireSafe

Commissioning Certificate

Customer Details: Company, Customer Email, Customer PO Reference, Job Reference No, Location, Collaborator Name

Date of Issue, Date of Installation/Commissioning

Installer/Commissioning Technician: Name, From Company, Company / Agent, Installation Location

Machine Details: Brand, Type, Model, Year No, VMA Serial No, Machine Age, BreatheSafe System, Pressuriser Model, Monitor Model, Monitor Serial No, Fresh Air Filter P/N, Return Air Filter P/N, A/C. Carbon Filter P/N

Removed Parts/Filters: Fresh Air Filter P/N, Return Air Filter P/N

Commissioning and Calibration Results: Date of Test, Max Pressure (Pa), Pressure Setpoint (Pa), Actual Pressure (Pa), Motor Load %

Nonconformities: Tested at A/C vent, Tested in Breathing Zone

Warning: Servo Drive Motor - 3 years or 15,000 hours extended warranty

Installation Notes

**BreatheSafe**  
Part of AireSafe

AIR CONDITIONING FAN MUST BE TURNED TO MEDIUM SPEED TO CIRCULATE AIR & MINIMISE CO<sub>2</sub> LEVELS.

MACHINE SN: BREATHESAFE CONTROLLER SN:

DATE INSTALLED: MACHINE HOURS:

AUTO PRE-SET PRESSURE (Pa): MAX CABIN PRESSURE (Pa):

NOTES (FILTER PART NUMBERS):

1 2 3 4 5 6 7 8 9 10 11 12 13 14 15 16 17 18 19 20 21 22 23 24 25 26 27 28 29 30 31

JAN FEB MAR APR MAY JUN JUL AUG SEP OCT NOV DEC

2023 2024 2025 2026 2027 2028

Technical Support Phone: 1300 667 597 | www.breathe-safe.com

| BREATHESAFE SYSTEM TROUBLE SHOOTING GUIDE *TOUCH CONTROL |  |   |
|--|--|---|
| FAULT  | POSSIBLE CAUSE   | SOLUTION  |
| *ERR error code  | Poor sensor connection                                     | Remove & refit pod connection cable                                 |
|  | Corrupted coding   | Contact support for default reset pin                               |
| *Check filter alarm                                      | Service hour timeout                                       | Access <b>Check Runtime</b> menu - reset hours via 7597 code        |
| Temperature / CO2 error                                  | Sensor not connected                                       | Fit sensor or disable via site access CO2 & or temperature menu     |
| Pressuriser running at full speed/noisy                  | Filter blocked   | Service filter  |
|  | Door or window open  | Ensure doors & windows securely shut                                |
|  | Cabin sealing capacity not adequate                        | Perform pressure test procedure & seal leak points as required      |
|  | Sense pipe blocked   | Ensure clear & not bent   |
|  | Internal sensor damaged                                    | Replace controller<br><b>**No need to change setpoint</b>           |
| Filter blocking quickly                                  | Defective cabin sealing                                    | Perform pressure test procedure & seal leak points as required      |
|  | Pre-cleaner failed   | Check operation & replace if necessary                              |
| Display blank  | Poor power supply  | Check mains supply fuse & correct voltage                           |
|  |  | Check voltage & 20AMP supply/connections at pin <b>1</b> @ monitor  |
|  |  | Check earth continuity at controller pin <b>12</b>                  |
|  | Failed controller  | Replace monitor   |
| Controller showing 0.0 pressure                          | Fresh air filter blocked                                   | Check filter condition & replace if required.                       |
| Low pressure alarm                                       | Door or window open  | Ensure doors & windows securely shut                                |
|  | Cabin sealing capacity not adequate                        | Perform pressure test procedure & rectify cab sealing               |
|  | Pressuriser not operating                                  | Ensure correct voltage 12v or 24v to pressuriser motor pin <b>A</b> |
|  |  | Check 1.6V - 10V present at motor Pin <b>C</b>                      |
|  |  | Check 20A Supply fuse   |
|  |  | Check earth continuity Pin <b>B</b>                                 |
| Pressure sense tube blocked                              | Unplug at monitor & ensure clear flow to external of cabin |   |
|  | Ensure pressure tube fitted correct port <b>A</b>          |   |
|  | <b>**No need to change setpoint</b>                        |   |
| Pressuriser not working                                  | Poor power supply  | Check 20A mains fuse & correct voltage                              |
|  |  | Ensure adequate wire size & no voltage drop                         |
|  |  | Ensure correct voltage 12v or 24v to pressuriser motor pin <b>A</b> |
|  |  | Check 1.6V - 10V present at motor Pin <b>C</b>                      |
|  | Poor earth   | Check earth continuity @ motor pin <b>B</b>                         |
| Motor faulty   | Replace TL4M   |   |
| <b>Access Codes:</b>                                     | <b>Site Access: 7597</b>                                   | <b>Contact Support for Factory Setup Pin</b>                        |

### User Settings Instructions

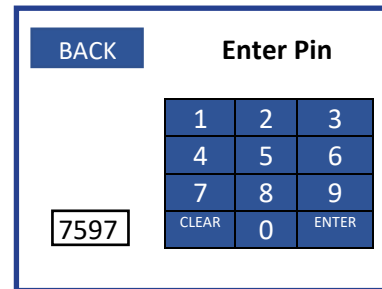
#### ENTER SET UP MODE

Start-Up Screen > Main Screen > Settings Button > Settings Screen > Site Access Button > Insert Pin > Site Menu

To enter the Setup mode, press the SETTING button.

Then enter SITE ACCESS MENU. Type in 4-number pin and press ENTER.

Insert Pin = 7597

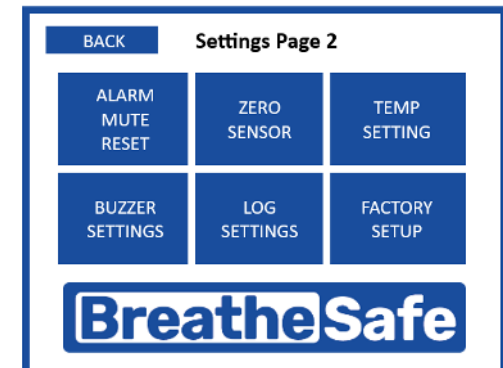
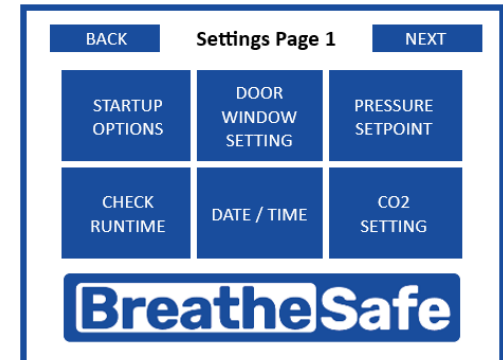
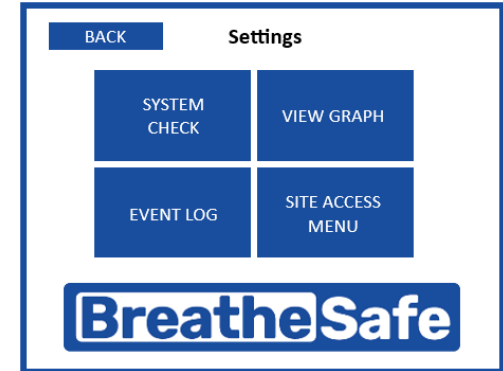


#### SET UP PARAMETERS

Placing the BreatheSafe 200027 unit into Setup mode allows the adjustment of the following parameters:

- Time (hours/minutes/seconds)
- Date (day/month/year)
- Pressure alarm setpoint
- Preferred cabin pressure
- Alarm delay/ intervals of alarm
- Calibration and system settings
- Resetting of the data logging
- Service reminders interval gap
- Reset current runtime between services
- CO2 settings and alarms

### USER SETTINGS INSTRUCTIONS



## PRESSURE SETPOINT

The pressure setpoint changes the pressure that the cabin will be maintained. INPRESS TS maintains the pre-set pressure within the cabin compared to outside.

Enter Setup mode and select ADJUST SETPOINT button. Then, use the onscreen UP and DOWN buttons to change the corresponding fields.

**1** Main dashboard showing Cabin Pressure 50Pa, CO2 Level 200 PPM, and Temperature 20°C.

**2** Settings menu with options: SYSTEM CHECK, VIEW GRAPH, EVENT LOG, and SITE ACCESS MENU.

**3** Enter Pin screen with PIN 7597.

**4** Settings Page 1 with options: STARTUP OPTIONS, DOOR WINDOW SETTING, PRESSURE SETPOINT, CHECK RUNTIME, DATE / TIME, and CO2 SETTING.

**5** Pressure Settings screen showing Pressure Units = Pascals, Alarm Set Point 20, Pressure Set Point 50, and Pressure Alarm Delay 5 mins.

## PRESSURE ALARM SETTING

## USER SETTINGS INSTRUCTIONS

The mining industry benchmark for cabin pressure is 50 pascals and low-pressure is set at 20 pascals.

After a delay the alarm will activate if cabin pressure remains below the pre-set value. Enter Setup mode and select ADJUST SETPOINT button. Then, use the onscreen UP and DOWN buttons to change the corresponding fields.

**1** Main dashboard showing Cabin Pressure 50Pa, CO2 Level 200 PPM, and Temperature 20°C.

**2** Settings menu with options: SYSTEM CHECK, VIEW GRAPH, EVENT LOG, and SITE ACCESS MENU.

**3** Enter Pin screen with PIN 7597.

**4** Settings Page 1 with options: STARTUP OPTIONS, DOOR WINDOW SETTING, PRESSURE SETPOINT, CHECK RUNTIME, DATE / TIME, and CO2 SETTING.

**5** Pressure Settings screen showing Pressure Units = Pascals, Alarm Set Point 20, Pressure Set Point 50, and Pressure Alarm Delay 5 mins.

## SERVICE INTERVAL

Use the onscreen UP and DOWN buttons to change the service interval setpoint.

To reset the current runtime to zero, press the RESET CURRENT RUNTIME button and enter the site access pin.

The sequence of screenshots for Service Interval settings is as follows:

- 1**: Main dashboard showing Cabin Pressure (50Pa), CO2 Level (200 PPM), and Temperature (20°C).
- 2**: Settings menu with 'SITE ACCESS MENU' highlighted in red.
- 3**: 'Enter Pin' screen with a numeric keypad and the pin '7597' entered.
- 4**: 'Settings Page 1' menu with 'CHECK RUNTIME' highlighted in red.
- 5**: 'Pressure Settings' screen showing 'CURRENT RUNTIME' at 700 and 'SET SERVICE INTERVAL' at 1000.

## DATE & TIME SETTINGS

Change the recorded date displayed and measured by the INPRESS TS.

## USER SETTINGS INSTRUCTIONS

The sequence of screenshots for Date & Time settings is as follows:

- 1**: Main dashboard showing Cabin Pressure (50Pa), CO2 Level (200 PPM), and Temperature (20°C).
- 2**: Settings menu with 'SITE ACCESS MENU' highlighted in red.
- 3**: 'Enter Pin' screen with a numeric keypad and the pin '7597' entered.
- 4**: 'Settings Page 1' menu with 'DATE / TIME' highlighted in red.
- 5**: 'Date/Time Settings' screen showing the date set to 04 / 22 / 2023.

## PRESSURE ALARM BUZZER SETTING

To disable the buzzer, toggle through to the ENABLED and DISABLED buttons.

**1** Main dashboard showing Cabin Pressure (50Pa), CO2 Level (200 PPM), and Temperature (20°C).

**2** Settings menu with 'SITE ACCESS MENU' highlighted.

**3** Enter Pin screen with '7597' entered.

**4** Settings Page 1 with 'PRESSURE SETPOINT' highlighted.

**5** Settings Page 2 with 'BUZZER SETTINGS' highlighted.

**6** Alarm Buzzer Settings screen with 'ENABLED' highlighted for Pressure Buzzer.

## CALIBRATE ZERO SENSOR

Over long runtime, the 200027 may need recalibration. This screen allows the sensor to be recalibrated if more than 5 Pascals are out. To recalibrate, open windows and doors, turn off air conditioning, and any other device that may alter cabin pressure. Then, press the AUTO ZERO SENSOR button and leave the cabin while measuring. This process will reset the Zero Pressure.

## ALARM BUZZER SETTINGS

**1** Main dashboard showing Cabin Pressure (50Pa), CO2 Level (200 PPM), and Temperature (20°C).

**2** Settings menu with 'SITE ACCESS MENU' highlighted.

**3** Enter Pin screen with '7597' entered.

**4** Settings Page 1 with 'PRESSURE SETPOINT' highlighted.

**5** Settings Page 2 with 'ZERO SENSOR' highlighted.

**6** Zero Sensor Adjustment screen with 'AUTO ZERO SENSOR' button highlighted.



## CO2 MODULE ENABLE/DISABLE

Enable or disable to CO2 module used for measuring CO2 levels within the cabin.

## CO2 PRIMARY ALARM POINT

The first alarm will sound when CO2 levels inside the enclosure reach this point.

### CO2 SETTINGS

1

2

3

4

5

1

2

3

4

5

### CO2 ALARM DELAY

After CO2 (concentration in ppm) within the cabin reaches the 1000 ppm setpoint, the alarm will sound after this designated amount of time. The Alarm Delay adjusts the time between the INPRESS TS measuring CO2 concentration and sounding the alarm. Use the onscreen ADJUST buttons to change the corresponding fields. For example, press to toggle through Disabled / 1 – 10 minutes.

**1** Main dashboard showing CO2 Level at 200 PPM.

**2** Settings menu with 'SITE ACCESS MENU' highlighted.

**3** 'Enter Pin' screen with PIN 7597.

**4** 'Settings Page 1' with 'CO2 SETTING' highlighted.

**5** 'CO2 Sensor Alarm Setting' screen showing 'CO2 ALARM DELAY SETTING' at 2 Min.

**6** 'Critical Alarm Mute Timeout Adjustment' screen showing 'SET MUTE TIMEOUT MINUTES' at 10 Mins.

### CO2 CRITICAL ALARM MUTE RESET

The critical alarm is set at 2500 PPM and cannot be changed. The mute delay, however, can be configured.

### CO2 SETTINGS

**1** Main dashboard showing CO2 Level at 200 PPM.

**2** Settings menu with 'SITE ACCESS MENU' highlighted.

**3** 'Enter Pin' screen with PIN 7597.

**4** 'Settings Page 1' with 'CO2 SETTING' highlighted.

**5** 'CO2 Sensor Alarm Setting' screen showing 'CO2 CRITICAL ALARM SETPOINT' at 2500 PPM.

**6** 'Critical Alarm Mute Timeout Adjustment' screen showing 'SET MUTE TIMEOUT MINUTES' at 10 Mins.

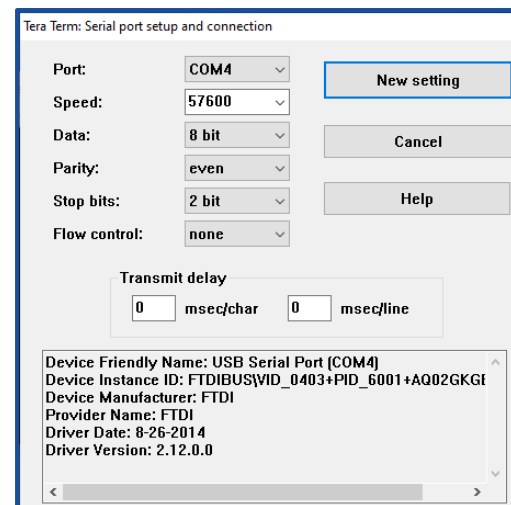
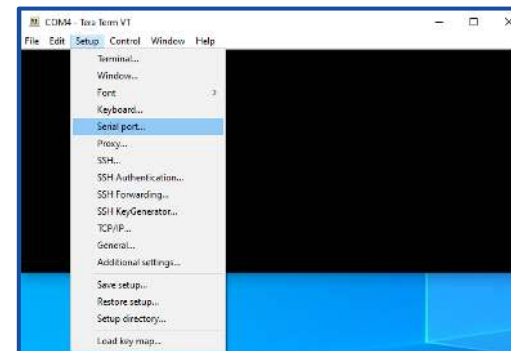
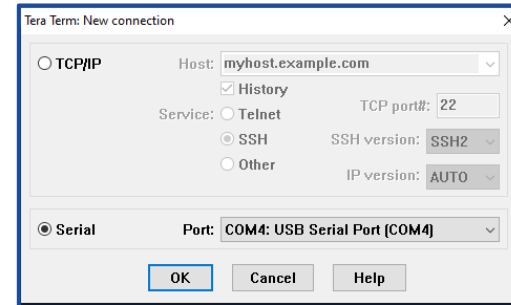
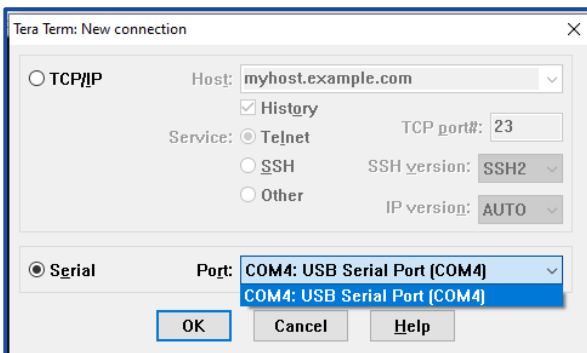
## Data Download – Setting up RS232 Connection



- 1 Plug the RS232/USB adaptor into a free USB port on your computer.
- 2 Open up TeraTerm software.  
*(TeraTerm is an open-source software tool and easily accessible via online search)*
- 3 Use the following settings in TeraTerm: Serial and choose the correct port connection.

Hint:  
Click on the COMxx Port with the “USB serial Port” connection from the drop-down menu.

Example:  
COM 4  
This connection may be different on your computer.

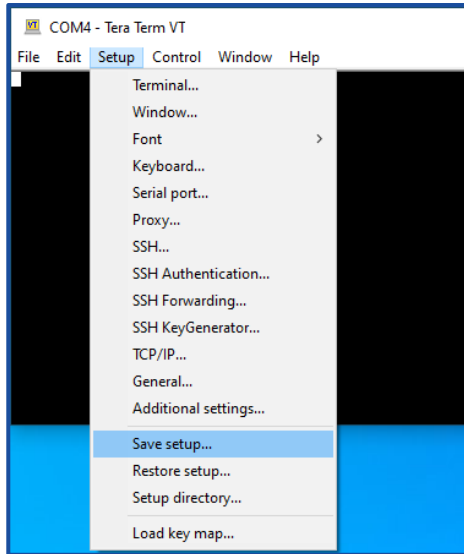


## DATA DOWNLOAD

- 4 Click OK once the correct communication port has been identified.
- 5 Go to SETUP and click on Serial Port.
- 6 Change the COM ports to the following configuration:  
  
Baud  
Rate: 57600 Data: 8 bit  
Parity: EVEN  
Stop: 2 bit  
Flow Control: NONE

## DATA DOWNLOAD

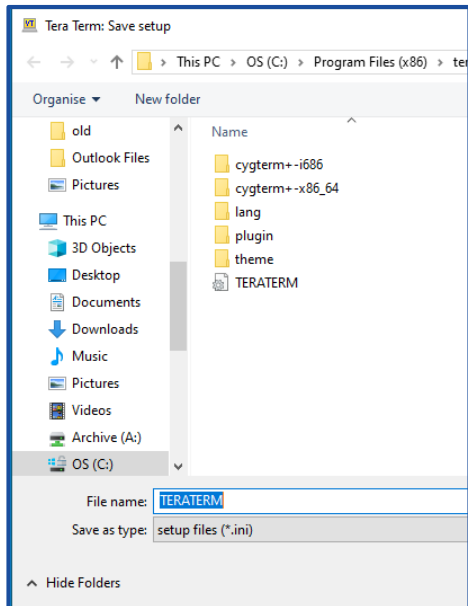
### Data Download – Setting up RS232 Connection



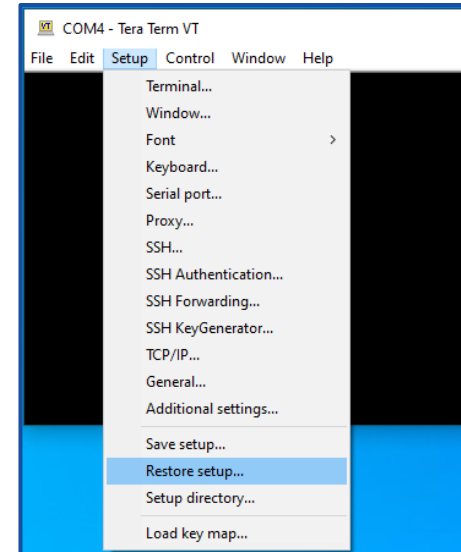
- 7 If required, you may choose to save the COM port settings. Go to Settings and click save the setup.

Hint: From the drop-down menu, click on the Save Setup.

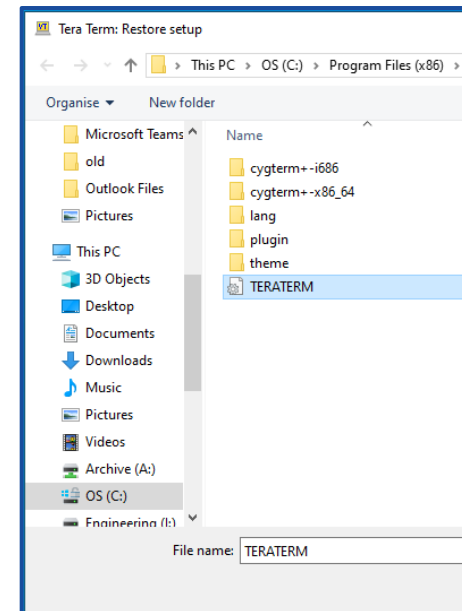
Name the file and save it.



- 8 The next time a download is required, you may restore the setup, and the required COM PORT settings will be loaded, ready to download the data file from the 200027 unit.

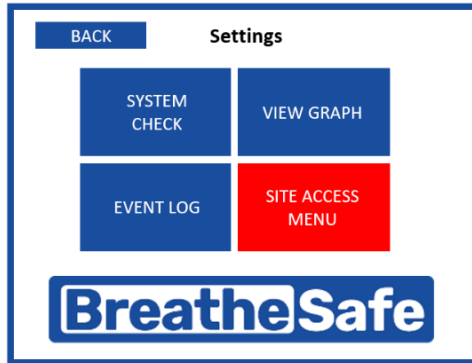


- 9 From the drop-down menu, click on Restore setup.

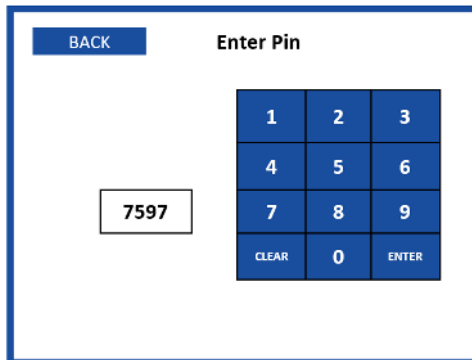


- 10 Choose the file name you have already saved.

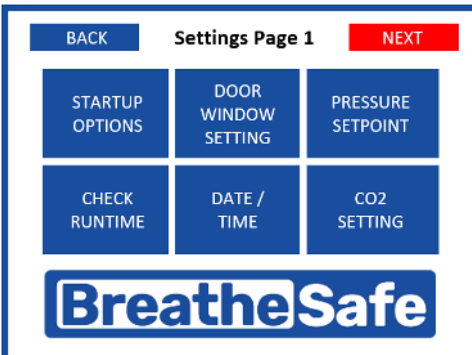
## INPRESS Controller Set Up



1. Press 'SITE ACCESS MENU'.

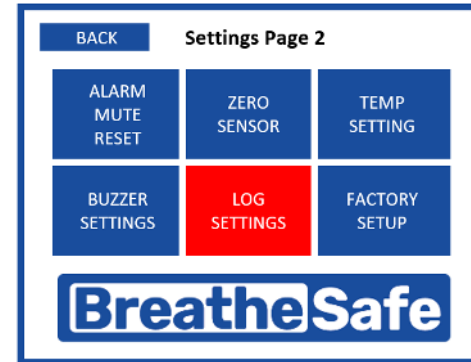


2. Enter the access pin '7597'.

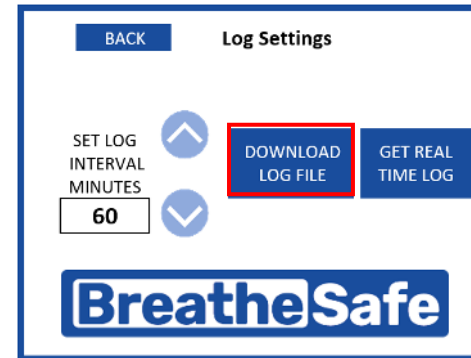


3. Press 'NEXT'.

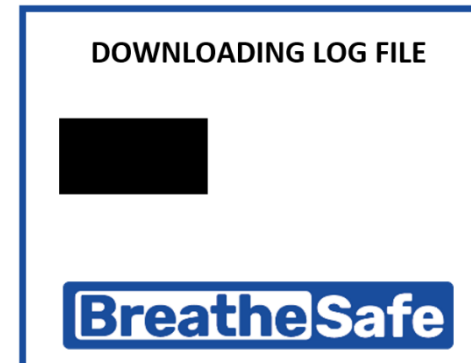
## CONTROLLER SET UP



4. Press 'LOG SETTINGS'.



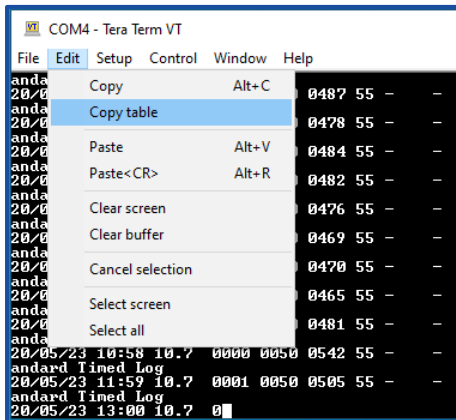
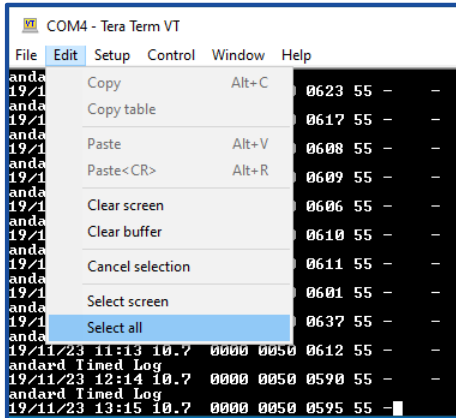
5. Press 'DOWNLOAD LOG FILE'.



6. Data is now downloading from controller to terminal open on the computer (TeraTerm in this example).

### DATA DOWNLOAD

### Data Download – Copying Contents from Terminal to Spreadsheet



|    | A          | B     | C                   | D                 | E               | F          |
|----|------------|-------|---------------------|-------------------|-----------------|------------|
| 1  | DATE       | TIME  | MOTOR (VOLT) OUTPUT | CABIN PRESSURE PA | CABIN PRESET PA | CO2 Sensor |
| 2  | 12/11/2023 | 16:43 | 2.1                 | 50                | 50              | 600        |
| 3  | 12/11/2023 | 17:44 | 2.1                 | 50                | 50              | 596        |
| 4  | 12/11/2023 | 18:46 | 2.1                 | 51                | 50              | 601        |
| 5  | 12/11/2023 | 19:47 | 2.1                 | 50                | 50              | 603        |
| 6  | 12/11/2023 | 20:48 | 2.1                 | 50                | 50              | 595        |
| 7  | 12/11/2023 | 21:50 | 2.1                 | 50                | 50              | 593        |
| 8  | 12/11/2023 | 22:51 | 2.1                 | 50                | 50              | 591        |
| 9  | 12/11/2023 | 23:52 | 2.1                 | 50                | 50              | 588        |
| 10 | 13/11/2023 | 0:54  | 2.1                 | 51                | 50              | 595        |
| 11 | 13/11/2023 | 1:55  | 2.1                 | 50                | 50              | 582        |
| 12 | 13/11/2023 | 2:56  | 2.1                 | 50                | 50              | 587        |
| 13 | 13/11/2023 | 3:58  | 2.1                 | 51                | 50              | 593        |
| 14 | 13/11/2023 | 4:59  | 2.1                 | 50                | 50              | 598        |
| 15 | 13/11/2023 | 6:00  | 2.1                 | 51                | 50              | 742        |
| 16 | 13/11/2023 | 7:02  | 2.1                 | 51                | 50              | 767        |

12 From the drop-down menu, click on the Edit menu function.

13 Press "Select All".

14 Select "Copy table".

15 Open a blank excel document and click on the page. Then, right-click to paste the copied table.

16 Fields are:

Date, time, motor (volts) output (e.g. 5.5 = 55%), cabin pressure (Pa), cabin pressure pre-set (Pa), CO2 sensor.

### Excel Data Instructions – Unformatted

Open an Excel sheet and select the first cell A-1. Next, press and hold down the CTRL button on your keyboard and then press the letter V on the keyboard.

This procedure will paste the copied data onto that Excel sheet. Once that data has been pasted onto the Excel sheet, click on 'DATA' on the pull-down menu, followed by 'Text to Columns'. Next, select 'Delimited' on the newly opened window and click on Next.

Only select the 'Comma' button in the next window and then click 'Finish'. Then, the Excel fields will update such that each piece of data is placed in the correct columns.

The data is now ready for archiving.

### Data Logging Formats

BU No: xxxxxx (the device number unique to each unit and used for identification – format = 000000)

Time: [09:25]

Date: [25/07/12]

Pressure: 32 (Pascals) as an example.

| Alarm Type |                      |
|------------|----------------------|
| 0          | = No alarm           |
| 1          | = Low-pressure alarm |
| 2          | = Window open        |
| 3          | = Door open          |

### INPRESS TL WARRANTY

#### Express Warranty

All BreatheSafe products carry a warranty against defects in materials or workmanship, provided the defects are not from factors outside of BreatheSafe's control (including neglect, lack of maintenance, improper installation or operation, unauthorized servicing repair, etc.). BreatheSafe will replace goods defected in material or workmanship at our Queensland factory or designated branch\*. All parts deemed as failed or faulty must be returned to BreatheSafe for evaluation unless otherwise stated in writing.

**Note-** Systems must be installed and commissioned as per BreatheSafe installation and commissioning instructions. Once commissioned, the online commissioning sheet must be filled in, extending the components warranty as below. In addition, the system must be serviced and maintained correctly and by trained and qualified personnel. This requisite includes BreatheSafe technicians, qualified automotive air-conditioning technicians, or qualified auto electricians.

#### Warranty period – Standard

- 1 year or 10,000 hours (whichever occurs first).
- Controllers – 1 year no extended warranty option.
- Warranty Period Extension when commissioning documents are registered online within 28 days of installation
- Extended warranty\*\* only offered if commissioning maximum pressure test reaches at least 250Pa.
- Brushless motor fixed speed two years, or 10,000 hours (whichever occurs first).
- Variable speed brushless motor 15,000 hours, or 3 years\*\* (whichever occurs first).

Must be supplied with a variable speed pressure controller, data download required for 3-year warranty option. Link to online Commissioning and Extended Warranty Registration form <https://www.breathe-safe.com.au/commission/>

#### What is not covered under Express Warranty?

- Failures are due to incorrect application.
- Damage resulting from neglect, misuse, lack of maintenance, improper installation, or operation, inappropriate or abnormal use, accidental or unauthorized servicing repair.
- Failures are due to parts not being sold or approved by BreatheSafe.
- Failures arising from any other cause that is not directly related to a defect in material or workmanship.

This Express Warranty is VOID if the product is altered, modified, or used in the manner it was not designed for, also including unauthorized repairs, or using maintenance and repair parts other than those supplied by BreatheSafe.

#### BreatheSafe responsibilities

If there is a defect in material or workmanship not caused by the excluded failures during the warranty period, BreatheSafe will either replace the defective goods at our Queensland factory, or designated branch. \*

Alternatively, BreatheSafe may elect to provide new replacement parts, BreatheSafe approved repair parts or assembled components needed to repair the defect. BreatheSafe reserves the right to provide a refund of the purchase price in lieu of replacement or repair at BreatheSafe's discretion. The replacement or repaired product will be sent to you freight prepaid by the customer or made available for pick-up on site.

#### Users Responsibilities

The customer should ensure that the system is maintained according to BreatheSafe service requirements and only authorized parts must be used to service and maintain BreatheSafe systems. In the event of a suspected warranty claim, BreatheSafe should be contacted in the first instance to arrange the repair or to assist with diagnosis. Claims should be made within one week of the repair.

After contacting BreatheSafe, you may be required to deliver or send the parts to BreatheSafe's Queensland factory or designated branch. \* Link to online Warranty claim form <https://www.breathe-safe.com.au/warranty/>

#### Exclusion and Limitations on Damages and Remedies

This warranty is provided in lieu of all other warranties, written or oral, whether expressed by affirmation, promise, description, drawing, model, or sample. To the extent allowed by law, all warranties other than this warranty, whether express or implied, including implied warranties of fitness for a particular purpose, are disclaimed. The maximum liability of BreatheSafe under this warranty shall not exceed the original purchase price of the product. Interference with the equipment by or abuse, or by operating the equipment at ambient temperatures or with electrical power characteristics outside the ranges indicated in our specification shall be excluded from this warranty, as shall consequential damages.

Excluded from any express warranty are costs incurred in relation to service outside our factory our designated service branch, including traveling time, waiting time, transport costs, mechanical and overtime payments required. As per Australian Consumer Law: You are entitled to choose a refund or replacement for major failures with goods. If a failure with the goods or service does not amount to a major failure, you are entitled to have the failure rectified in a reasonable time. If this is not done, you are entitled to a refund for the goods and to cancel the contract for the service and obtain a refund of any unused portion. You are also entitled to be compensated for any other reasonably foreseeable loss or damage from a failure in the goods or service.

**\*This express warranty gives you specific legal rights, and you may also have other rights that vary from country to country.**